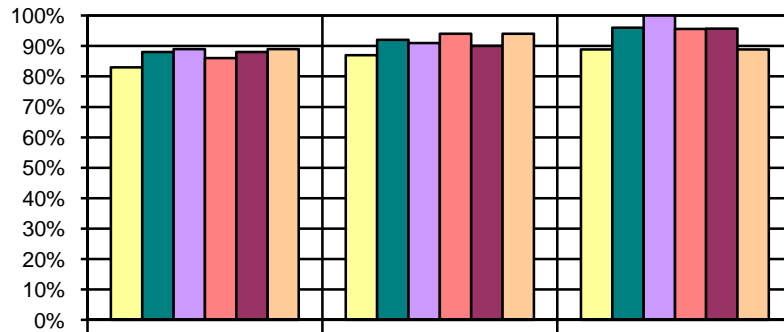


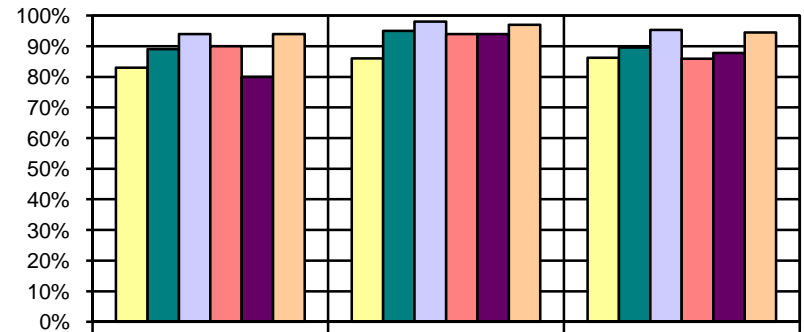
ISAT 2008-2010: State/District/School Percent Proficient & Advanced
ELEMENTARY READING

Grade 3



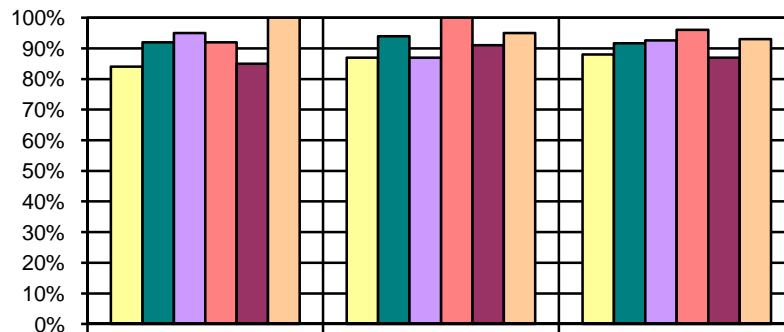
	2008	2009	2010
State	83%	87%	89%
District	88%	92%	96%
Lena	89%	91%	100%
McDonald	86%	94%	96%
West Park	88%	90%	96%
Moscow Charter	89%	94%	89%

Grade 4



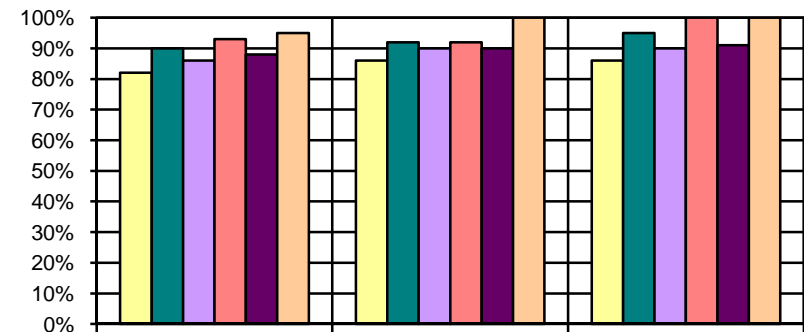
	2008	2009	2010
State	83%	86%	86%
District	89%	95%	90%
Lena	94%	98%	95%
McDonald	90%	94%	86%
Russell	80%	94%	88%
Moscow Charter	94%	97%	95%

Grade 5



	2008	2009	2010
State	84%	87%	88%
District	92%	94%	92%
Lena	95%	87%	93%
McDonald	92%	100%	96%
Russell	85%	91%	87%
Moscow Charter	100%	95%	93%

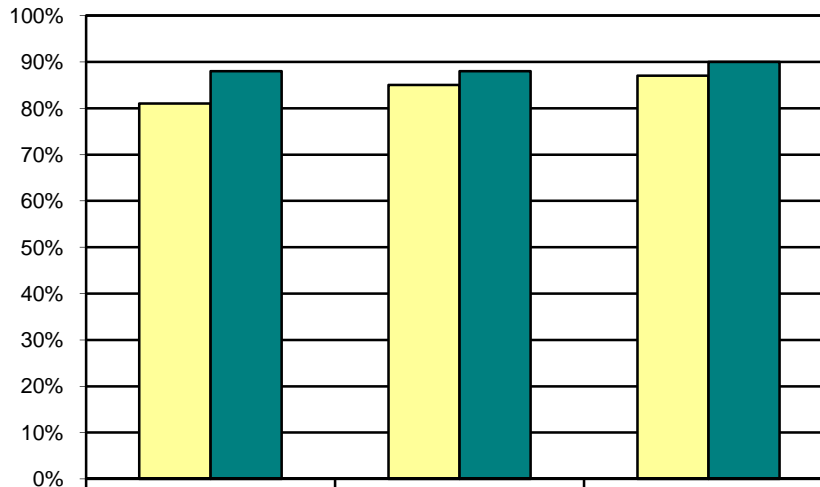
Grade 6



	2008	2009	2010
State	82%	86%	86%
District	90%	92%	95%
Lena	86%	90%	90%
McDonald	93%	92%	100%
Russell	88%	90%	91%
Moscow Charter	95%	100%	100%

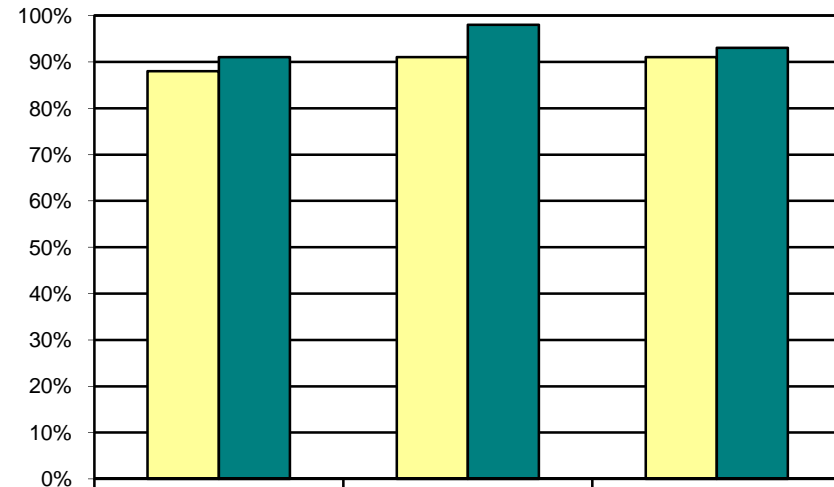
ISAT 2008-2010: State/District/School Percent Proficient & Advanced
SECONDARY READING

Grade 7



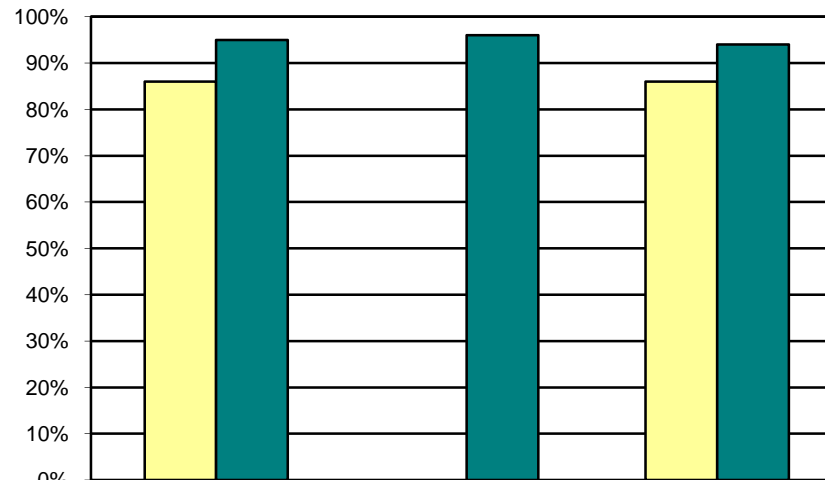
State	81%	85%	87%
District/MJHS	88%	88%	90%

Grade 8



State	88%	91%	91%
District/MJHS	91%	98%	93%

Grade 10



State	86%		86%
District /MHS	95%	96%	94%