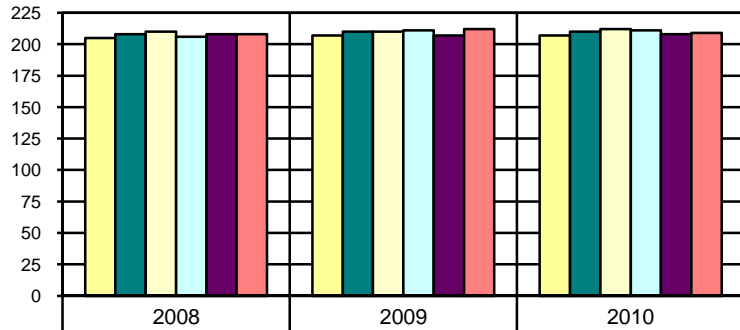


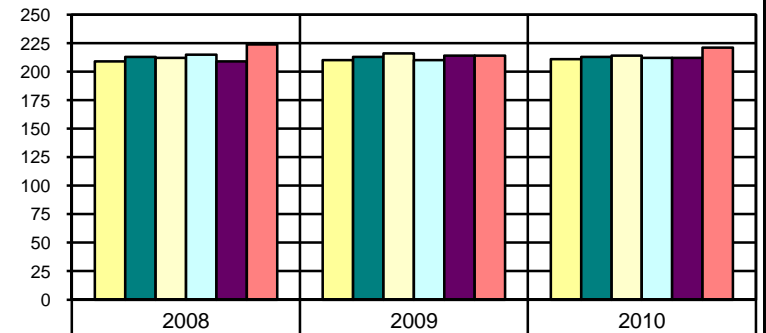
**ISAT 2008-2010: State/District/School Scale Scores**  
**ELEMENTARY READING**

**Grade 3**



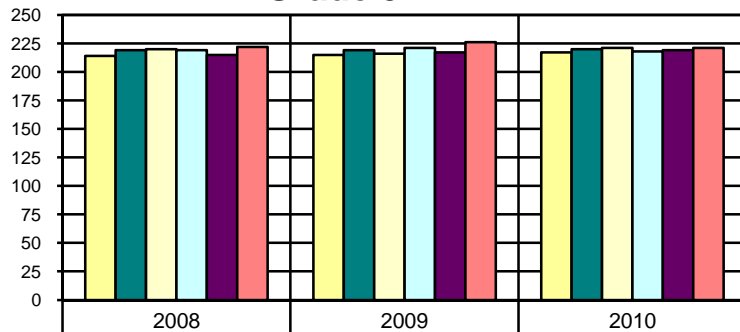
|                |     |     |     |
|----------------|-----|-----|-----|
| State          | 205 | 207 | 207 |
| District       | 208 | 210 | 210 |
| Lena           | 210 | 210 | 212 |
| McDonald       | 206 | 211 | 211 |
| West Park      | 208 | 207 | 208 |
| Moscow Charter | 208 | 212 | 209 |

**Grade 4**



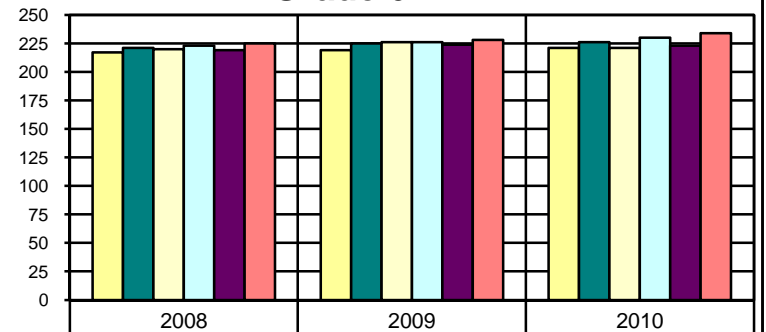
|                |     |     |     |
|----------------|-----|-----|-----|
| State          | 209 | 210 | 211 |
| District       | 213 | 213 | 213 |
| Lena           | 212 | 216 | 214 |
| McDonald       | 215 | 210 | 212 |
| Russell        | 209 | 214 | 212 |
| Moscow Charter | 224 | 214 | 221 |

**Grade 5**



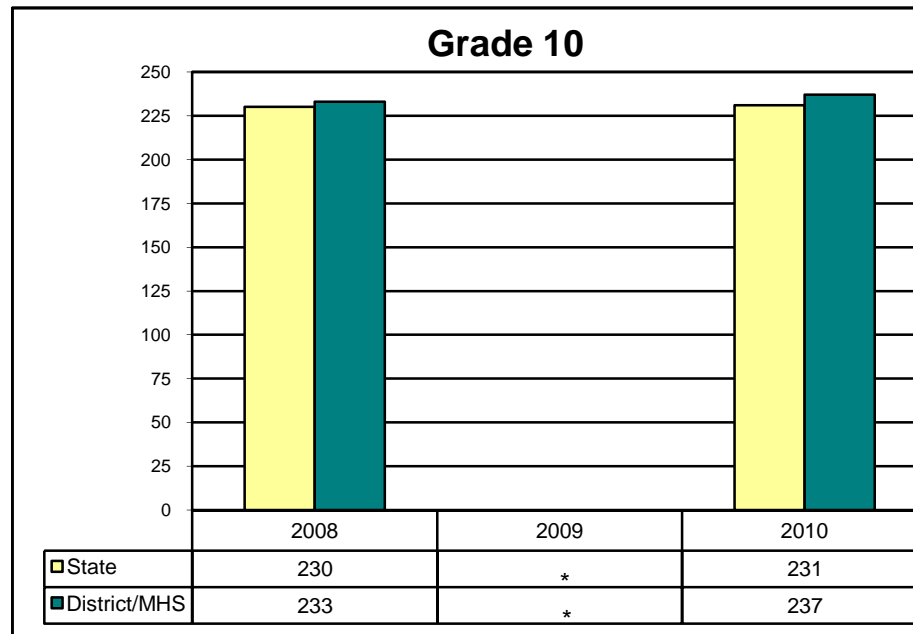
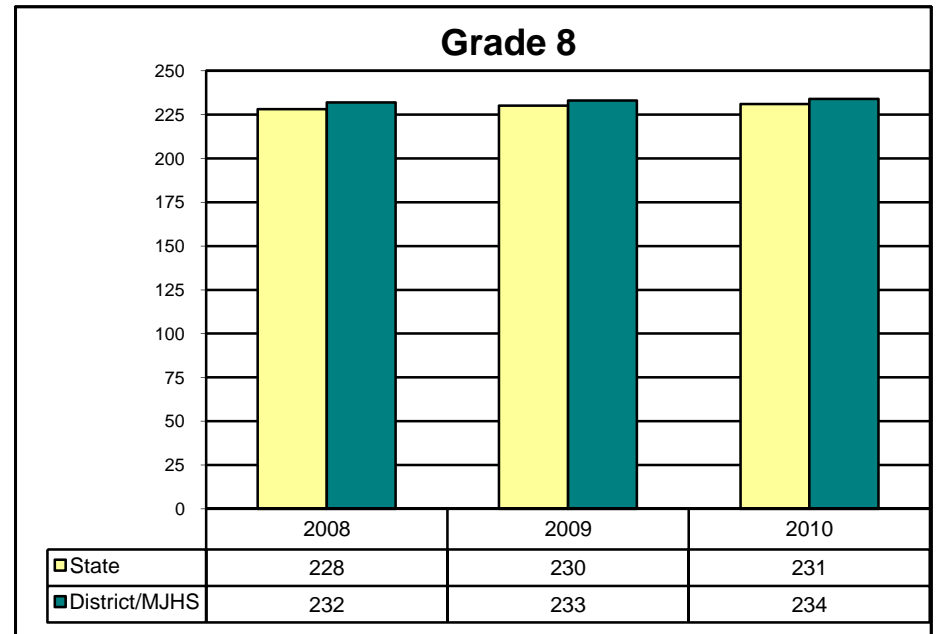
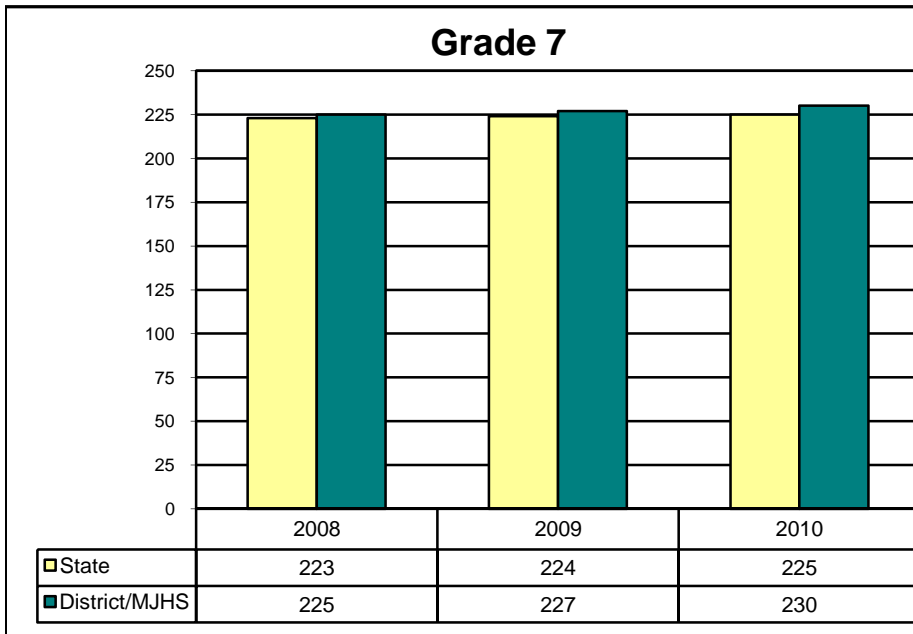
|                |     |     |     |
|----------------|-----|-----|-----|
| State          | 214 | 215 | 217 |
| District       | 219 | 219 | 220 |
| Lena           | 220 | 216 | 221 |
| McDonald       | 219 | 221 | 218 |
| Russell        | 215 | 217 | 219 |
| Moscow Charter | 222 | 226 | 221 |

**Grade 6**



|                |     |     |     |
|----------------|-----|-----|-----|
| State          | 217 | 219 | 221 |
| District       | 221 | 225 | 226 |
| Lena           | 220 | 226 | 221 |
| McDonald       | 223 | 226 | 230 |
| Russell        | 219 | 224 | 223 |
| Moscow Charter | 225 | 228 | 234 |

**ISAT 2008-2010: State/District/School Mean Scores**  
**SECONDARY READING**



\*Not available