

School Connections

Superintendent's Message

by Dale Kleinert, Superintendent

Inside this issue:

Superintendent's Message	1-3
Student Meals	4
Title I Math Program	4
Moscow Junior High	5
Moscow High School	6
Paradise Creek Regional	7
J. Russell Elementary	7
A. B. McDonald Elementary	8
Lena Whitmore Elementary	9
West Park Elementary	10
Robots Visit School	11
Special Education Update	11

At the beginning of the 2010-11 school year, I announced to our District staff and parent support groups that the administration would begin the large project of determining the feasibility of a configuration shift in the Moscow School District. Their task was to develop answers to the barriers of any type of shift and also to identify and define the benefits to the students of the Moscow School District. My task was to gather information, listen to their concerns, and make a preliminary recommendation to the Board of Trustees.

- It has been proven that the curricular and academic needs of our students are designed to fit into a 9-12 high school model. Our middle level students are now facing a conflicted instructional model that requires middle level credits and high school transcripts credits in one building.
- As we have seen first-hand during our facilities tours this fall, some of our elementary schools are overcrowded with teachers serving stu-

dents in areas not designed for instruction. Students are placed in hallways, doorways, and other locations that are not appropriate.

- The results of the study show that we could move from our current configuration to a 6-8 and 9-12 configuration. I recommended to the Board in December that any configuration adjustments directed by the Board of Trustees take place at the beginning of the 2012-13 school year to give time for staffing and classrooms to be adjusted in a dignified and respectful manner.
- Many staff members, parents, and patrons have already provided very valuable input over the past several months that was crucial to the initial Configuration Feasibility Study. Input included questions, comments, and concerns have begun to be addressed. A complete list of "Frequently Asked Questions" is now

posted to the MSD website along with important timelines and other related information.

Public Configuration Presentations

Two community panel presentations were held on February 10 at the MHS Auditorium that marked the beginning of multiple planning opportunities. Administrators will continue to meet with all of the stakeholders to gather additional input, ideas, and expertise as we move through this process. At the end of the planning process, I will make a recommendation to the Board. If the recommendation is to move forward, and the Board resolves to do so, a district-wide planning effort will move into high gear, with teacher, administrator, and parent teams working together to form the best educational model possible for the students, teachers, families, and patrons of the Moscow School District.

Russell/West Park Configuration

Based on the following initial recommendation for Russell and West Park schools, it is of vital



School Connections is published electronically by the Moscow School District three times a year to keep parents, faculty, staff and the general public informed of District happenings.

continued from front page

importance that parent and teacher input continue to be taken in order to provide the best opportunity for all students and families before considering configuration adjustments to be made at the two schools. Following additional time for input, the administration will make a final recommendation to the Superintendent to forward to the Board of Trustees later this spring.

After completing an analysis of multiple options, it became clear that a very robust teaming atmosphere is currently available for all students at Russell and West Park. If two K-5 schools were to be formed, one of the schools would have only one teacher for each grade level and attendance zone lines would have to be redrawn in the process. Currently students have three teachers per grade level and student learning is optimized with the three teachers teaming each and every day. Multiple teacher teaming expertise is a benefit to the students in the current configuration. In addition, classroom balancing is much better served when there are multiple classrooms in each grade level. A school with only one grade level classroom has a more defined space limit and students over and above that limit would be transferred to other district schools

with room instead of remaining in the same school. It is also important to consider the cost of additional staffing needed in a configuration with two K-5 schools. Additional staff such as specialists, support personnel, and bussing would need to be provided along with the need to rezone the two elementary schools. We will continue to meet and gather input from the Russell and West Park constituencies before making a final recommendation.

Elementary Space Considerations

It is important to note that even though some of our elementary schools have room for their current enrollment, we now serve many of our elementary students in seven mobile classrooms. All but one of the mobile classrooms are very old and do not have appropriate insulation, heating systems, lighting, and emergency systems. In addition, electrical and other infrastructure elements in all of the buildings are strained for their current populations. Reducing the number of students in the buildings will provide some relief and also will provide space to grow.

There is also a need for additional K-Plus programming in the District. Each year, multiple families are denied the opportunity because of current space limita-

tions. Additional space in each school would provide this needed programming in the student's home school without bussing to different buildings as is done now.

District-wide Configuration Points

Obviously if a configuration change is approved, some teachers would move to a new building based on student need. Multiple teachers moved between buildings with their classrooms in 2002, and many lessons were learned from that move. The move was not staged correctly, it was done without detailed planning, and there was not appropriate assistance for teachers who moved. It is anticipated that the teachers who will move to their new buildings would receive extra time after school releases in 2012 to pack and extra time in the fall of 2012 before school begins to unpack. Extra packing/unpacking assistance for the teachers would be available and teacher rooms would be moved professionally during the summer and aligned with our summer cleaning process. Costs would be budgeted in two years over the 2011-12 and 2012-13 school year.

At the outset of the Feasibility Study, the administrators were directed to come up with a plan that did not add ongoing staffing expenses. No

continued on next page

time for input, the administration will make a final recommendation to the Superintendent to forward to the Board of Trustees

continued from previous page

extra staffing is necessary and no additional ongoing personnel costs will be incurred, In fact, the District will save money by reducing the number of teachers who now move from building to building.

Finding a way to reduce the number of teachers who travel between buildings was a priority during the initial Feasibility Study. Currently, eight classroom teachers move between the junior high and the high school each day. Initial plans include a major reduction of roving teachers which will be a cost-savings to the District. Almost one complete teaching position is lost for every six teachers who have to move between buildings. All of our specialists are needed in each of our schools and we strongly believe that a

well-balanced education is one of the District's cornerstones, and current programming is crucial for our students. In addition, our district-wide School Improvement Plan will call on every teacher and specialist to assist with an added emphasis on achievement efforts for all children in grades K-12.

There will obviously be some assignment adjustments for building aides, nutrition staff and other non-certified personnel. Our support services staffing have always, and will continue to be allocated in the best manner possible to meet the needs of our student population. It will be necessary to review and re-define some staffing to provide the best service we can give. It is our intent to use the year ahead to plan with all

components of our support staff to define and meet student needs in a responsible manner.

Many specific staffing questions will not be able to be answered until specific plans are in place. In addition, the current legislative session has proposals that will also impact staffing decisions that will need to be defined. It is important to remember that the plan presented at the February Panel Presentation was a basic outline that will continue to be defined and developed throughout the next school year. Specific details will be developed using Board policy, committee work, input, and listening sessions if the proposals are ratified by the Board of Trustees.

to review and re-define some staffing to provide the best service



Moscow High School



A. B. McDonald Elementary



Lena Whitmore Elementary



Moscow Junior High School



J. Russell Elementary



West Park Elementary

Student Meal Payments Now Online!

by Deb Adair, Business Manager

Moscow School District is now offering a fast and convenient way to pay for your student's school meals by credit card, debit card or electronic check using a secure, user-friendly Website. You may make a one-time payment or schedule recurring payments.

Per payment fee for E-checks (electronic checks) is \$0.49 and credit/debit cards is 2.75% plus \$0.25 with a \$1.00 minimum.

In order to properly credit your child's account, the Website will require entry of your student's unique identification number. This num-

ber is the PowerSchool student identification number. Secondary parents are familiar with this number. Elementary parents received a notice in the February 9 Wednesday packet. If you need help obtaining your child's number, please call your child's school or Mimi Pengilly, Director of Student Nutrition Services at 892-1123.

Each school's Website has a link for the on-line payment system. Simply click the link and follow the steps to set up your user account. Use your information to create the profile. Create a user name

and password. Once your account is set up, you'll step through selecting the school and entering your student's information. A telephone number is provided on the Website if you need help setting up the payment or your account.

Your feedback is welcomed on this service. Please feel free to contact Deb Adair, Business Manager at 892-1110 or adair@msd281.org



lunch meals using a secure, user-

MSD's Title I Math Program!

by Sarah Hanchey, Curriculum & Title I Director

Since 1965, the Federal Government has provided funding to states and school districts through Title I. The Title I program is designed to ensure that all students receive a fair and equal opportunity to have the same best possible education.

Lena Whitmore Elementary, Russell Elementary, West Park Elementary and Moscow Charter School all benefit from Title I services. The Moscow School District employs three Title I teach-

ers and seven paraprofessionals, who are all very dedicated to helping disadvantaged students meet challenging learning standards.

Title I programs have traditionally focused on helping students acquire reading skills. For the first time this year, the Moscow School District's Title I program has been expanded at Russell Elementary to focus on boosting students' math skills!

Under the direction of Title I paraprofessional

Rebecca Fromherz, a Title I Family Math Night took place at Russell on February 9. Many Russell staff members and volunteers contributed to the effort as students participated in fun, interactive math games focused on problem-solving skills. Way to go Title I!



program has been expanded at Russell Elementary to focus on boosting student

Bullying and Harassment Task Force

by Kevin Hill, MJHS Principal

At Moscow Junior High we are currently reviewing and updating our procedures for confronting bullying and harassment concerns that impact our students. In an effort to maintain the high degree of safety, comfort, and achievement students experience in our school, we have developed a School Safety Task Force.

Twelve staff members have volunteered to take part in an aggressive and substantial study of our school environment as well as to take time to develop an overall strategy for curtailing the frequency and severity of bullying throughout the building.

As a major component of our data collection process, the School Safety Task Force will be ad-

ministering surveys to staff, students, and parents. From this information, we will develop a targeted action plan to address those concerns. Our goal is to have a revised bullying and harassment policy ready for implementation during this school year.

The issues of bullying and harassment are not confined within the walls of our school. What we experience at school is a window to the events that occur throughout the greater Moscow area. Because of this, the Junior High and the Moscow School District are working with several community organizations in this endeavor.

Our school has accepted an invitation by the Latah County Human Rights Task Force to host a presentation and dia-

logue with students in our multi-purpose room. Our District has also teamed up with the Palouse Center for Conflict Management. This group is in the process of developing a community-wide approach to dealing with bullying and harassment issues in communities across the Palouse.

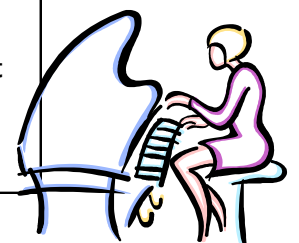
As always, addressing safety concerns at school relies heavily on communication with our staff, students, and parents. The support we continue to receive by the parents of our students will always be one of our greatest assets. With the support of our community, students at Moscow Junior High will continue to experience the safest, highest quality education in the state.

A revised bullying and harassment policy ready for implementation during this year.



TALENTED JUNIOR HIGH STUDENTS ABOUND!

From singers and musicians to dancers and comics, Moscow Junior High students have got talent! A variety of student acts were showcased at the MJHS Talent Show on February 11. The event entertained and delighted the audience with approximately twenty acts that the performers selected. It takes a lot of nerve to perform in front of a crowd. Your support was essential in the success of our Talent Show! The sales of concessions will support travel and competition costs for Future Problem Solvers and ticket sales will support MJHS Student Ambassadors.



Moscow High Pride

by Bob Celebrezze, MHS Principal

Moscow High School utilizes a diverse academic curriculum, service learning clubs, academic competition teams and athletics to serve our student body.

This allows for all students to find a niche and experience success. The faculty and staff provide academic excellence, which helps prepare our students for post-high school opportunities. Moscow High School strives to create a community of knowledgeable students, who respect themselves in the school and community in



which they live. Moscow High Pride is a climate and culture that is based on a commitment to excellence through respect, compassion, courage, honesty and responsibility.

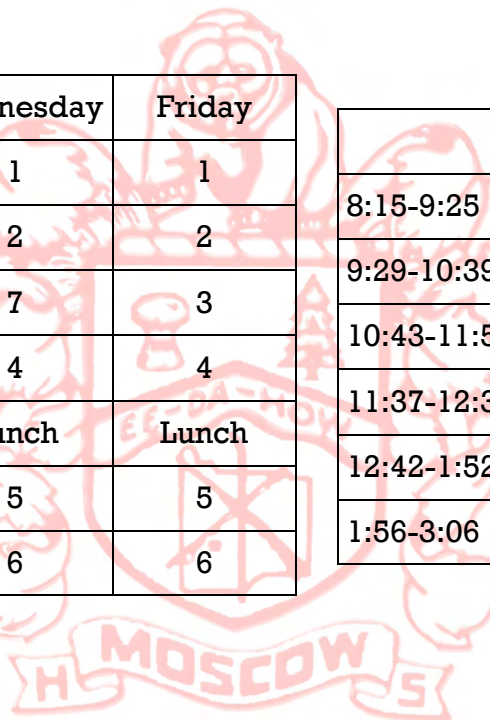


*“I A < G ` g h f] j
create a community
of knowledgeable
students, who
respect themselves
in the school and
community in which
h \ Y m ` `] j Y”*

Moscow High School Beginning Fall 2011 - Bell Schedule

	Monday	Wednesday	Friday
8:15-9:15	7	1	1
9:19-10:19	2	2	2
10:23-11:23	3	7	3
11:27-12:27	4	4	4
12:27-1:02	Lunch	Lunch	Lunch
1:06-2:06	5	5	5
2:10-3:10	6	6	6

	Tuesday	Thursday
8:15-9:25	1	1
9:29-10:39	7	2
10:43-11:53	3	3
11:37-12:38	Lunch	Lunch
12:42-1:52	4	7
1:56-3:06	5	6



Paradise Creek Regional High School

by Ed Norman, PCRHS Principal

Half of the school year is finished and we have just turned the corner toward the exciting and rejuvenating feeling that spring seems to bring. As the students are entering the 3rd quarter, the focus is on reaching the goal line of June 8, 2011 - seniors especially! Enrollment in some classes is full and so there is a waiting list for students. School is going well and the students have accomplished amazing things this year.

The fall art show held at *Wild @ Art* was wonderful. The publications class has created and printed two Paradise Creek Review newspapers. The students and

staff put on their annual Thanksgiving lunch. The students, staff, MSD Superintendent Dale Kleintert, and the MSD School Board members had a delicious meal with pleasant conversations.

Recently our secretary/aide, Lisa Smallwood, moved to a different secretarial position at the District Office, so we had to hire a new staff member. Rachel Molsee, was chosen to fill this posi-



tion. She is a certified teacher who recently completed her student teaching at Moscow Junior High. We are excited to have her with us and welcome her to our school family.

Coming this spring at PCRHS is the Idaho Education Network. The installation of fiber optics from the street side to the school will allow the already installed projector, camera and software to be used to its full capacity. It will create the ability for students to view already taped classes, and to sit in on a lab or lecture in a college setting. Most high schools in Idaho will have this capability in the next year.

ī 7 c a] b [· h
spring
at PCRHS is
the Idaho
Education
B Y h k c f _ " ī

J. Russell Elementary

by Ed Norman, Russell Elementary Principal

It was a storm! On November 17, 2010, J. Russell Elementary was changed inside and out by the strong winds that blasted through Moscow. Not only did the wind break off the top of one of our fifty foot trees, but it snapped off two telephone poles near the school. With the tree down and the poles broken off, it took all day for the power company to assess, plan, and then get the work accomplished to be able to turn the power back on to the school. As *Murder \ m N w g o e s*, the power was turned back on with the completion

of power-line and transformer work, only to have a power surge run through the building. This power surge blew many electrical circuits, transistors, surge protectors, ballasts and lights, and ruined quite a few electronics within the school. Daily routines were quickly returned the following day, and life at Russell was resumed. However the recovery is still in process. On the outside our front building view has changed, and our school family was saddened about the loss of the tree top. Part of the trunk of the fallen tree is

to be made into a bench which will adorn the school landscape. Thanks to all who helped in getting Russell school back to our daily routine. We are excited to continue our educational process of helping students increase their knowledge and understanding.



ī = h · k U g · U · g h c

McDonald Duck Update!

by Cindy Bechinski, McDonald Elementary Principal

The McDonald Ducks have been busy, happy, and productive! Under the direction of Ms. Sant, our students collected \$198.14 for the *Pennies for Peace* project! McDonald students participated in this campaign in January and raised \$198.14 in pennies! *Pennies for Peace* is a program of Central Asia Institute (CAI), founded by Greg Mortenson – author of the #1 New York Times best seller, *Three Cups of Tea*. A penny buys a pencil, \$265 pays a teacher for one year, and \$5,000 builds an entire school in Afghanistan and Pakistan, enabling more and more children, especially girls, to get an education and improve their quality of life and strengthen their communities. Way to go, Ducks!



The Ducks have also been doing a lot of “buddying-up.” Many of the upper grade classrooms have buddies from a primary grade classroom and they develop a close relationship throughout the

school year, supporting and encouraging one another. The photo shows students from Mrs. Bowe’s fourth grade class and Mrs. Cox’s Kindergarten class working together.



Sometimes they do art projects together, listen to one another’s presentations, and often the younger children practice reading with their buddies. The primary students are always so

excited to see their buddies, and the older students take the relationships very seriously, often acting in the role of a supportive brother or sister. Everyone benefits!



We have also had lots of fun hosting male and female Vandal athletes here at McDonald. The men’s basketball team, through the *Reader as Leaders* program, presented a terrific assem-

bly promoting the importance of reading. The football players and women basketball players came to join us at lunch. Go Vandals! Go Ducks!

We are also very excited about our coming attractions:

- Spaghetti Feed / Bingo Night: March 10
- Portfolio Sharing: March 31

Thanks for all of our fabulous parental involvement, volunteering, and overall support. Our PTO is FANTASTIC!! They help us improve our programming, learning opportunities, and safety for all of our students. We are lucky ducks, indeed!

*I H \ Y ' 8 i W
have also been
doing a lot of
buddying - i d " i*

Are We in Moscow Idaho or Moscow Russia?

by Kendra McMillan, Lena Whitmore Elementary Principal

One might not be sure which Moscow they were in when they visited the halls and classrooms of Lena Whitmore Elementary School during the last week of January. The 19th Annual International Week was once again celebrated through guest presentations from around the world, international des-

sert tasting from around the world and took off from there. Nineteen years later, we celebrated with guest presentations from parents, University of Idaho professors, and community members from the following countries: Egypt, Italy, Saudi Arabia, Ecuador, Brazil, Colombia, Venezuela, Isle of Man, New Zealand, Germany, France, Galapagos Islands, Mongolia, Malaysia, Taiwan, Ghana, Iran, and Denmark. Many thanks to our wonderful PAT members, Irina Crookston from the University of Idaho, and all the staff for making this event so special.

and Mexico. Sixth grade students wore costumes from countries through-



out the world and began the assembly with a "Parade of Nations". Students ended the assembly appropriately by singing "It's a Small World After All" to remind us all that no matter what Moscow we live in, we share more similarities than differences.



sert tasting, world map contests, international doll naming contests, greetings from around the world day, dress up from another country day, and a culminating assembly full of cultural dancing and singing. The halls of the school were beautifully decorated with the flags, artifacts, and clothing from countries around the world.

International Week was founded by Ismat Sheik, former staff member and parent from Pakistan. Her mission was to

Our week culminated with an assembly on Thursday, which included dancers from the Basque culture, Ireland,



The halls of the school were beautifully decorated with the flags, artifacts, and clothing from countries around the world.

West Park Elementary - Brightest Star

by Bill Marineau, West Park Elementary Principal



Idaho's culture of integrated volunteerism throughout the state.

West Park was recognized with Honorable Mention on November 10, 2010 at the Brightest Star Awards Ceremony in Boise, Idaho. On Wednesday, January 26, Dale Kleinert, Jenny Pierce, Susan Steele and Bill Marineau attended the "Capitol for a Day" ceremony in Culdesac, Idaho where they received additional recognition from Governor Otter.

Governor, C.L. "Butch" Otter and First Lady, Laurie Otter recognized Idaho's unsung heroes who work tirelessly as volunteers to improve the quality of life for

Idaho and its citizens. There were 103 nominees honored during this year's event and awards were presented in six categories. West Park Elementary was recognized in the category of School Volunteer of the Year. An excerpt from the award program reads:

West Park Elementary has a culture of integrated volunteerism throughout the school. This culture benefits students, families, staff and the community by providing reading buddies, school maintenance/clean-up during Saturdays of Service, organizing blood drives and fundraising for Red Cross and Inland Empire Blood Bank. The school has an extensive volunteer corps representing all aspects of the community.

Volunteers at West Park during December were:

- 36 Community and parent volunteers
- 25 Reading buddies
- 6 Mentors
- 104 U of I, Service Learning Students

In total, 171 community members volunteered their time to enhance student learning and help staff members.

West Park Elementary was nominated for this award by Adrian Wurr, Ph.D., Assistant Director for Service-Learning & Internships at the University of Idaho. He has been impressed with West Park Elementary staff for their dedication to service learning and volunteerism.



L to R: Bill Marineau, West Park's Principal, Jenny Pierce, West Park's secretary, Governor C.L. "Butch" Otter, Susan Steele, Volunteer Coordinator

Robots Visit School

by Bill Marineau, West Park Elementary Principal

Students at West Park and Lena Whitmore schools are bounding with excitement to use Lego Robotics to learn Science, Technology Engineering and Math. This opportunity



was made possible by the creative and resourceful vision of Mrs. Lulu Stelck, Gifted and Talented teacher. Mrs. Stelck wrote a competitive grant that was read along with 92 other applications. Of these, her grant was only one of ten that were accepted and it was reportedly the best written.

Jimmy Takata from the State of Idaho and President Jim Schmidt, Qwest

Foundation presented Mrs. Stelck with a check for over \$9600.00 to be used with GT students at West Park and Lena Whitmore!

Mrs. Stelck will be teaching many academic skills using the hands-on minds-on techniques that LEGO WeDo and

Mindstorms robotics construction sets provide. The unit is being presented to a group of students recommended by their teachers because of their classroom performance, including the gifted & talented students.

The new program builds on a student's basic knowledge to the complex and is designed to challenge the brightest learners from first through sixth grades.

First through third grade students will learn about motors, gears, sensors, and programming using stationary LEGO Pieces.

Fourth through sixth grade students will begin working with a movable and programmable robotic device. A video is being created of the students using the LEGO system to highlight the excitement and benefits of this innovative program.



More information about the GT program and LEGO project can be found at either the West Park or Lena Whitmore Websites or at www.cogitating.org.

bounding with excitement to use

Special Education Highlight

by Kevin McDonough, Special Services Director

Each year the District is required to take a count of the number and types of special education students that are enrolled and receiving special education services. This year that count was done through the state's new Idaho System for Educational Excellence (I.S.E.E.) data collection system. It has been finalized and on December 1, 2010 there were 261 students with disabilities receiving these services. That is down by seven students from this time last year. That number includes students at Moscow Charter School and some who were enrolled in private schools but does not include students at Palouse Prairie Charter School as

they are required to submit their own child count.

The District saw increases in the number of students with Autism, Cognitive Impairments, and Developmental Delays. It also saw decreases in the number of students with Health Impairments, Hearing Impairments, Learning Disabilities, Multiple Disabilities and Speech Impairments. Other categories that were identified, but whose numbers remained stable were Cognitive Impairments, Seriously Emotionally Disturbed, Language Impairments, Orthopedic Impairments, and Visual Impairments. Other data collected shows that the

District has a very high number of these students in very inclusive settings. It also shows that we deliver a wide variety of related services such as speech and language, occupational therapy, physical therapy, psychosocial rehabilitation, paraprofessional support, etc. We have a wonderful staff of professionals and paraprofessionals to deliver all of these services and also manage the meetings and paperwork that must be done. Along with that staff are tremendous parents who are committed to the education of their children and participate with us in moving these students forward to an independent and productive life.

is required to take a count of the number and types of special education students that are enrolled and receiving special