

Moscow Substance Use Statistics

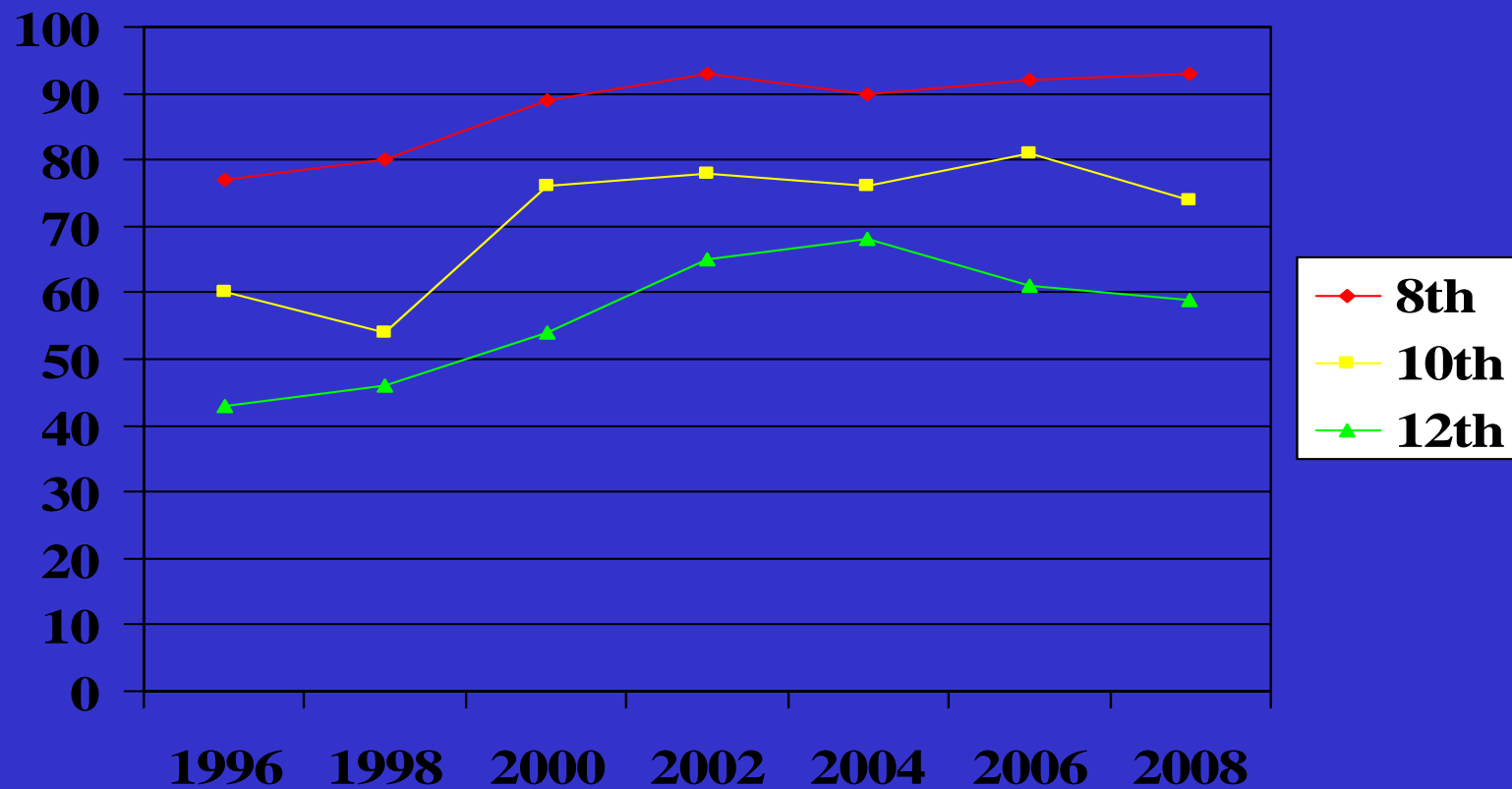
Source: Moscow School District

Substance Use and School Climate Surveys

1996,1998, 2000, 2002, 2004, 2006, 2008

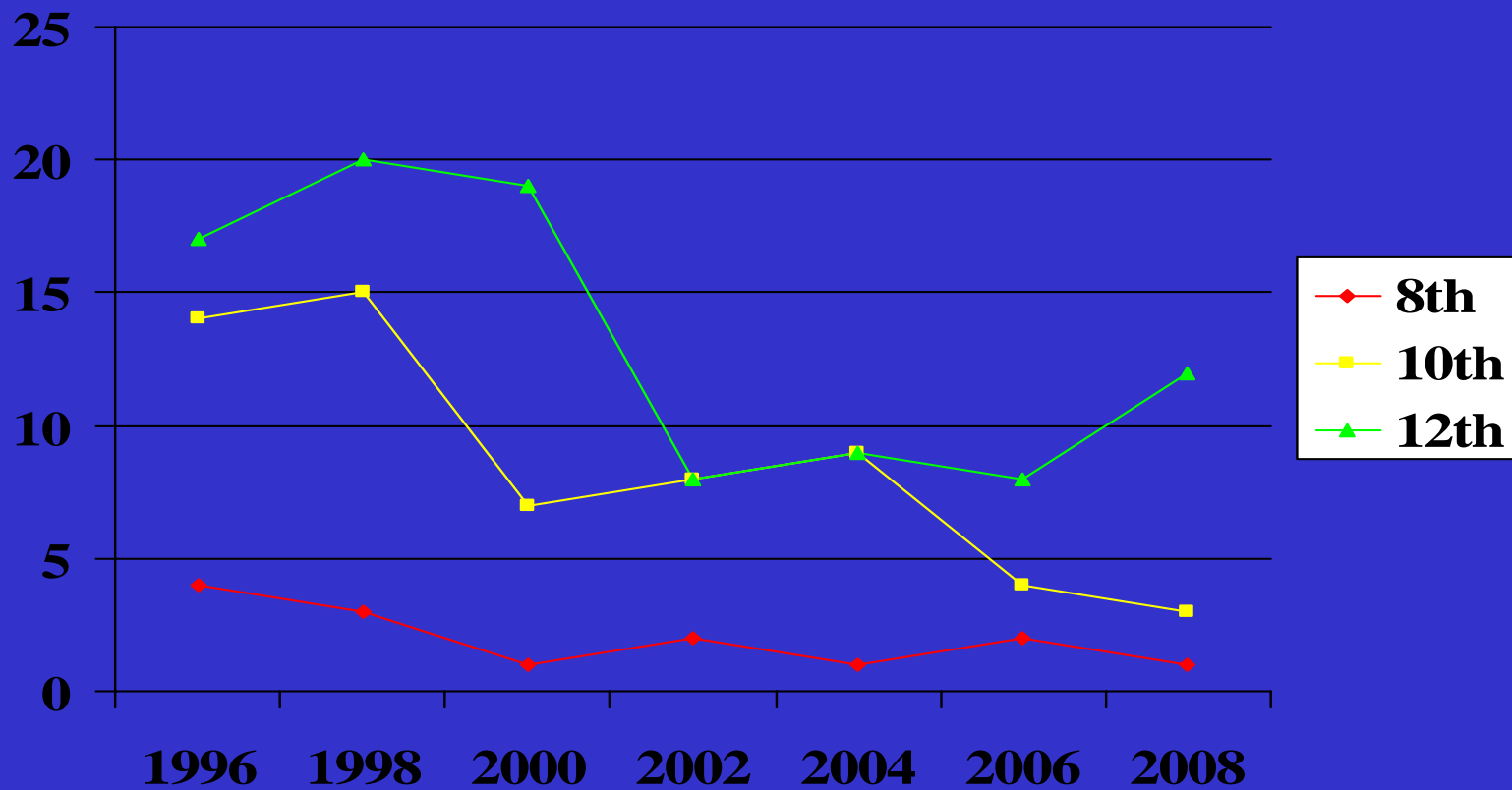
TOBACCO

Percentage of students reporting NO USE (smoking)



TOBACCO

Percentage of students reporting DAILY USE (smoking)

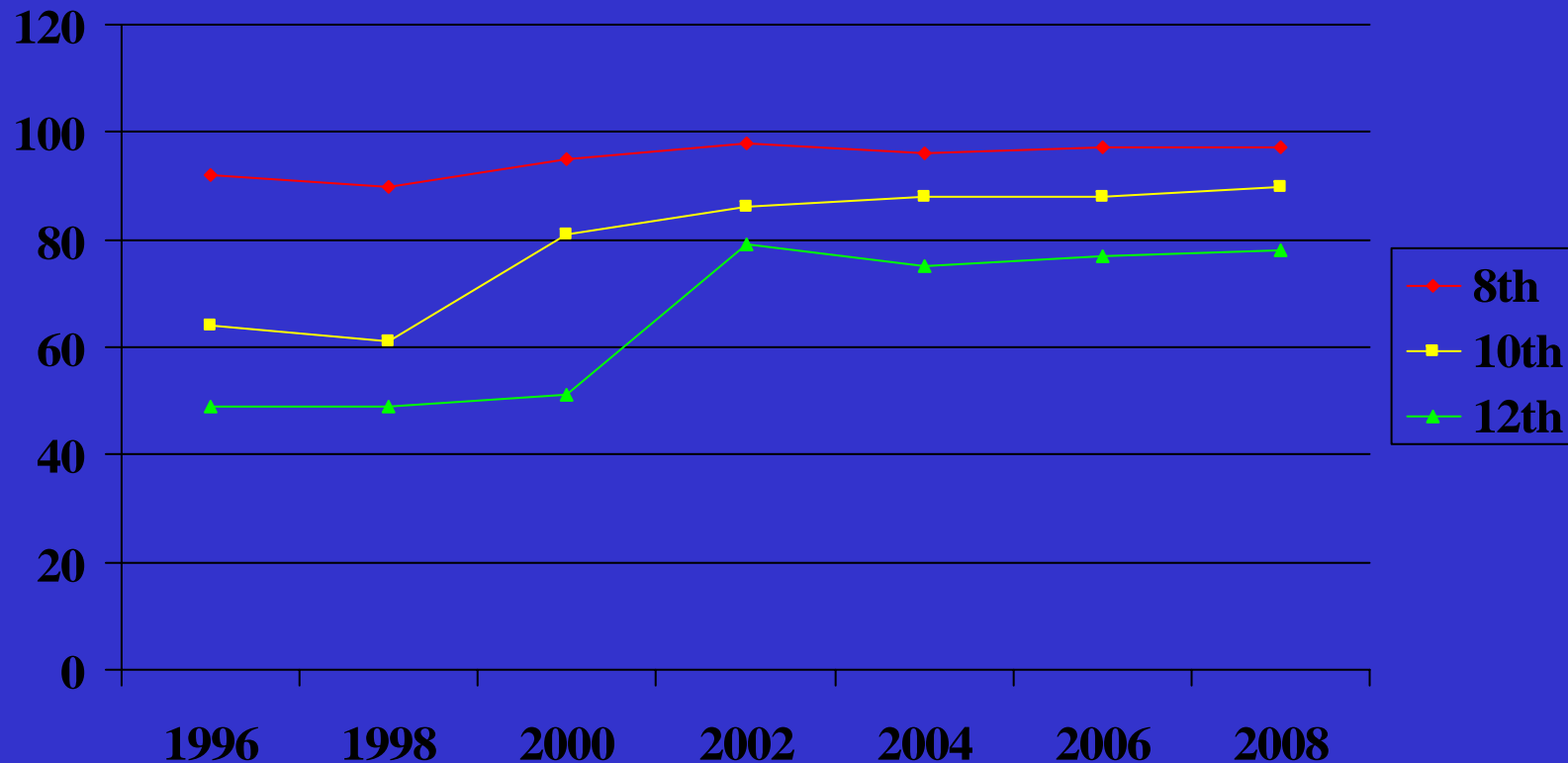


ALCOHOL

Percentage of students reporting NO USE or LOW USE

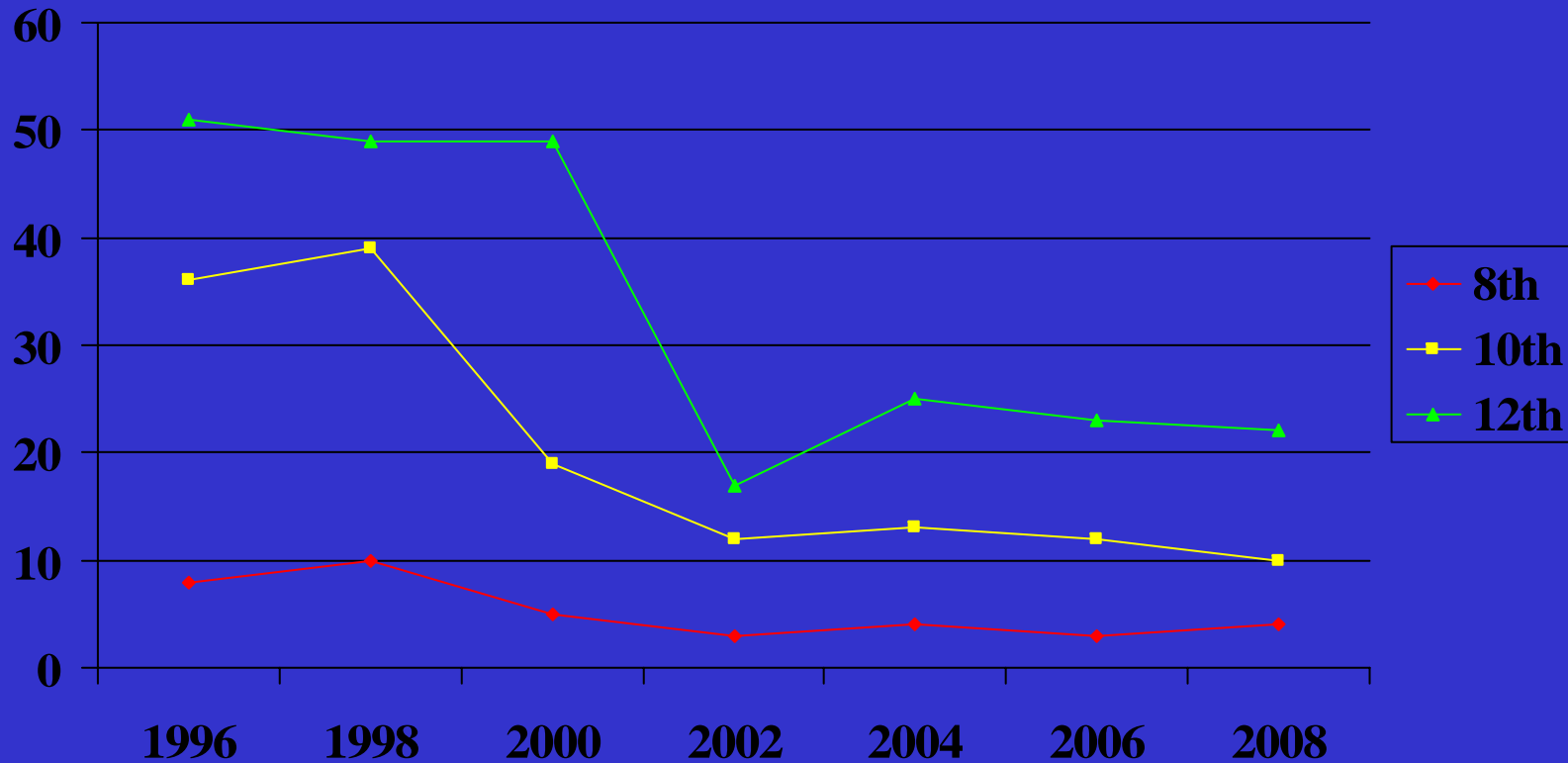
No Use: Student has never tried alcohol

Low Use: Student has tried alcohol but is an infrequent user or no longer uses at all



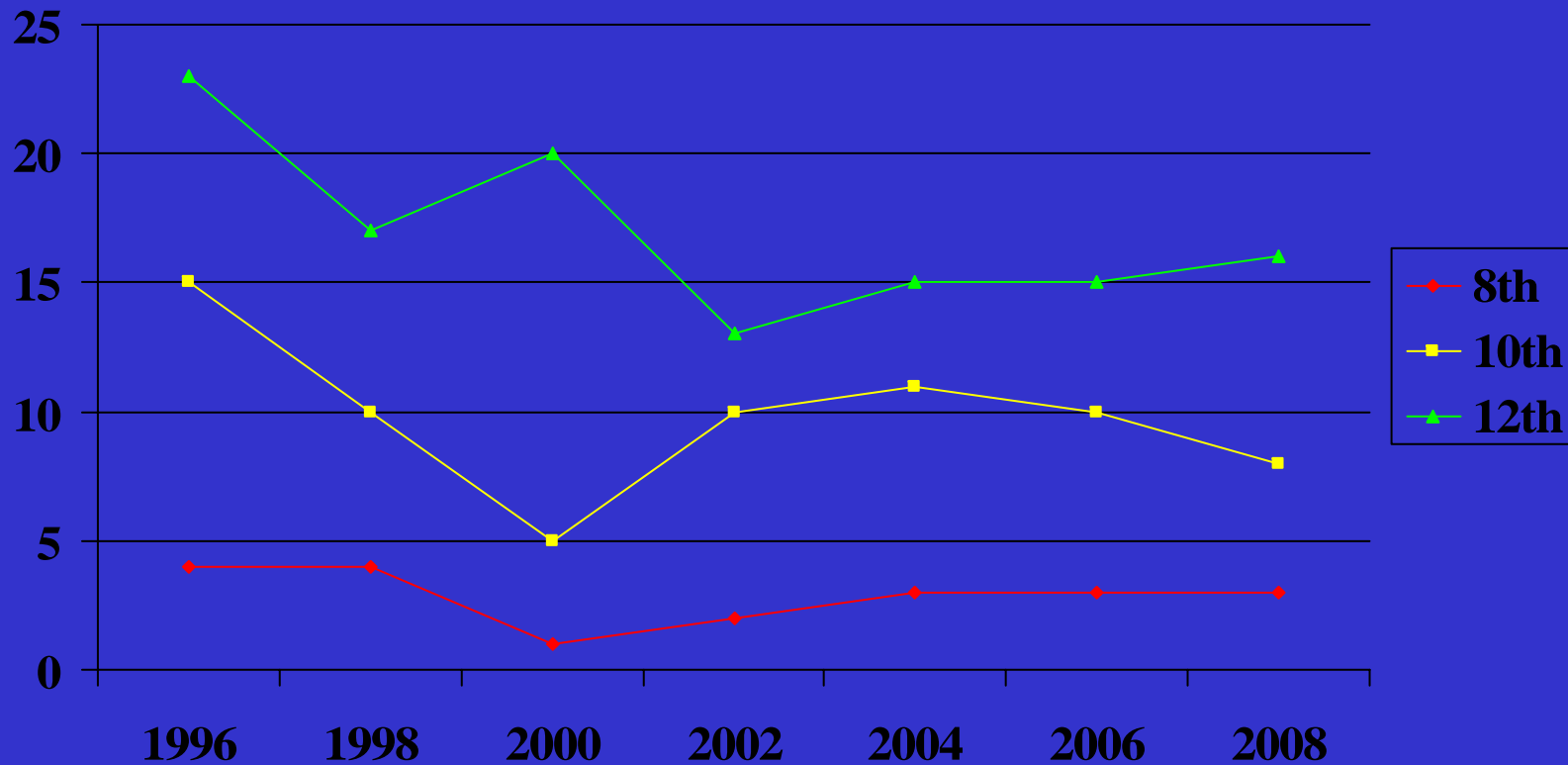
ALCOHOL

Percentage of students reporting MODERATE or HIGH USE
Moderate use: student drinks at least monthly, binge drinks occasionally
High use: student drinks daily or binge drinks at least monthly.



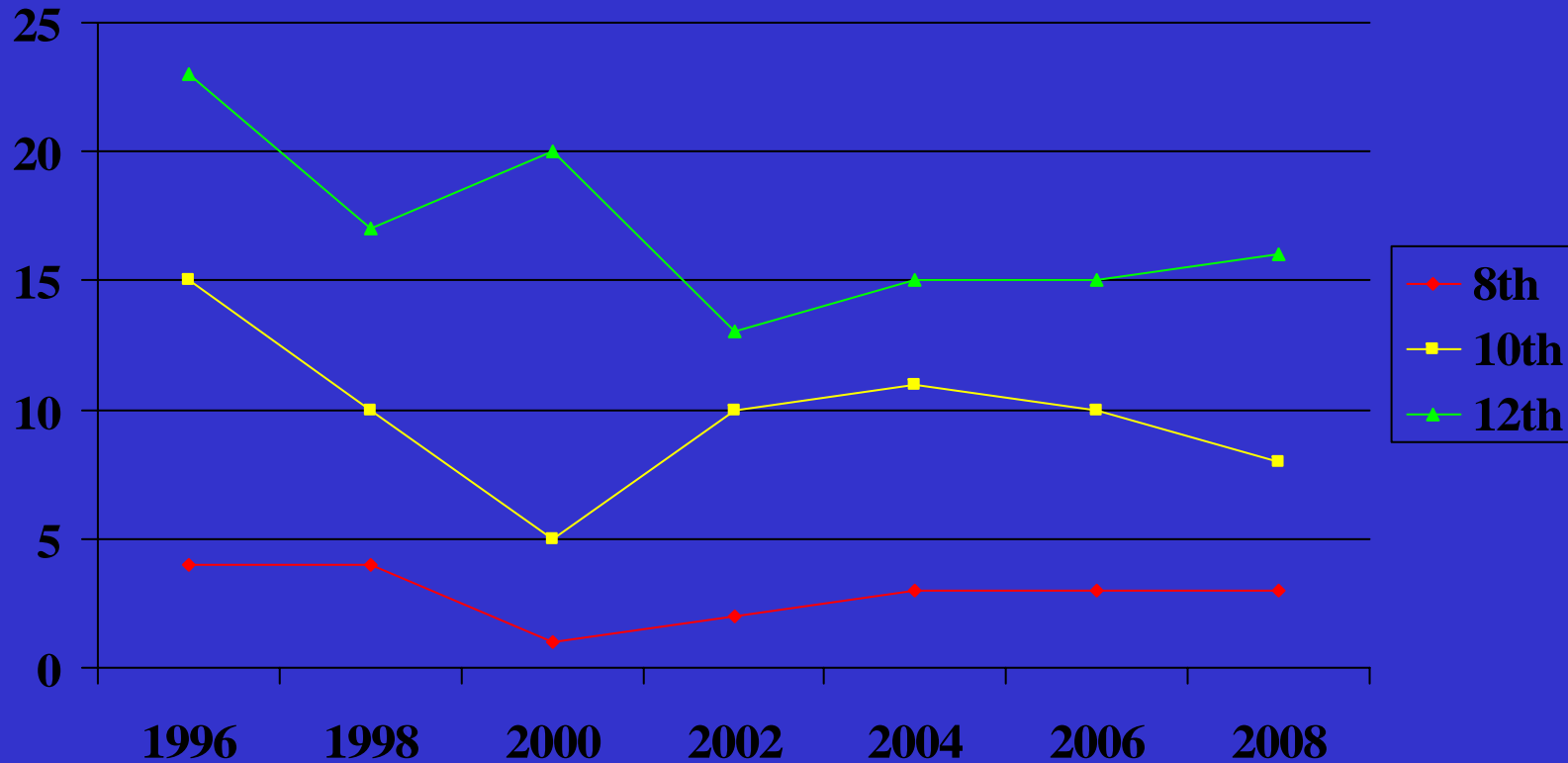
ALCOHOL

BINGE DRINKING: Percentage of students reporting having had five or more drinks in a row at least three times in the past 30 days.



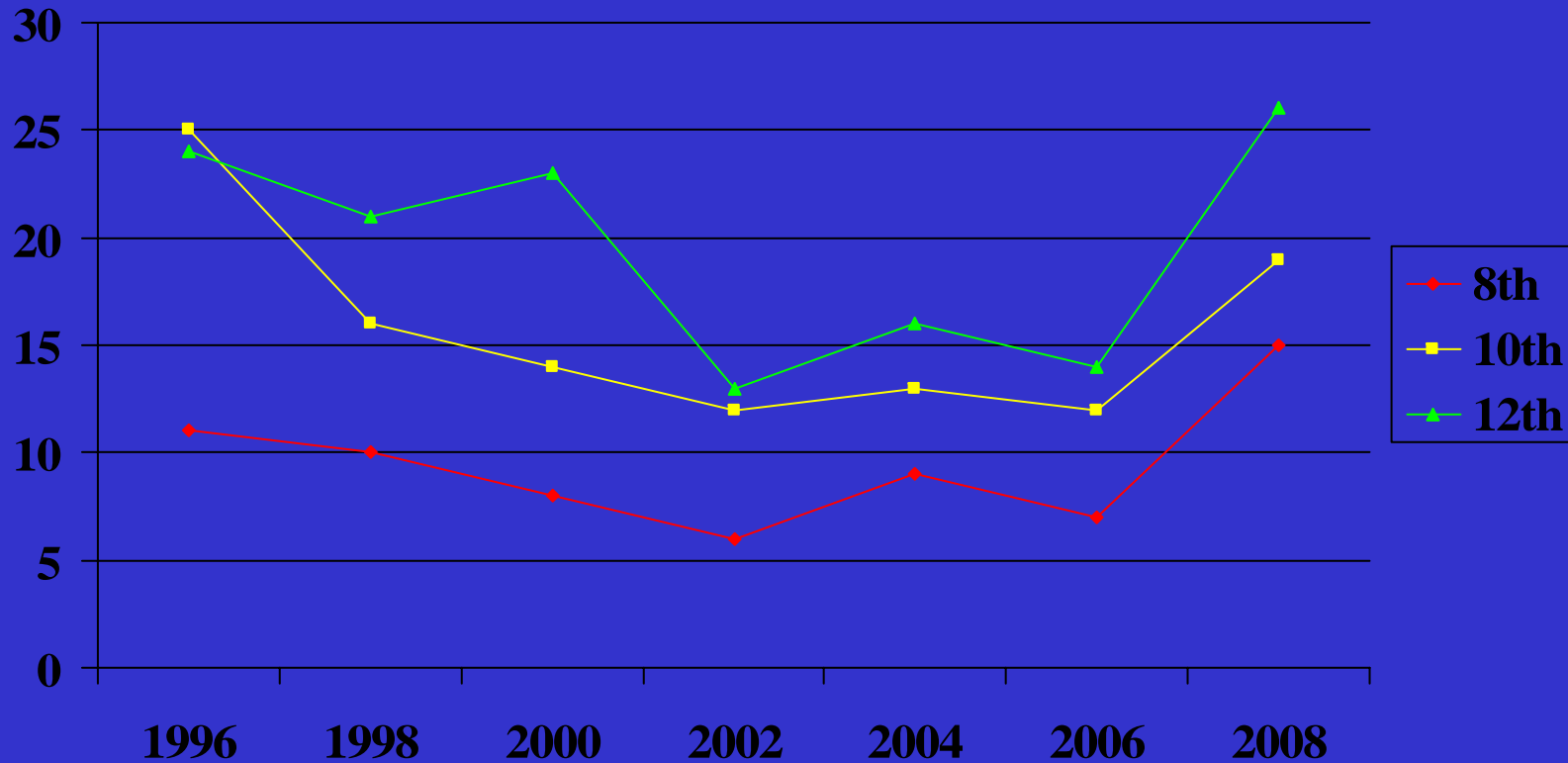
ALCOHOL

AGE of FIRST USE: If you drink, how old were you when you had your first drink? 10 or younger



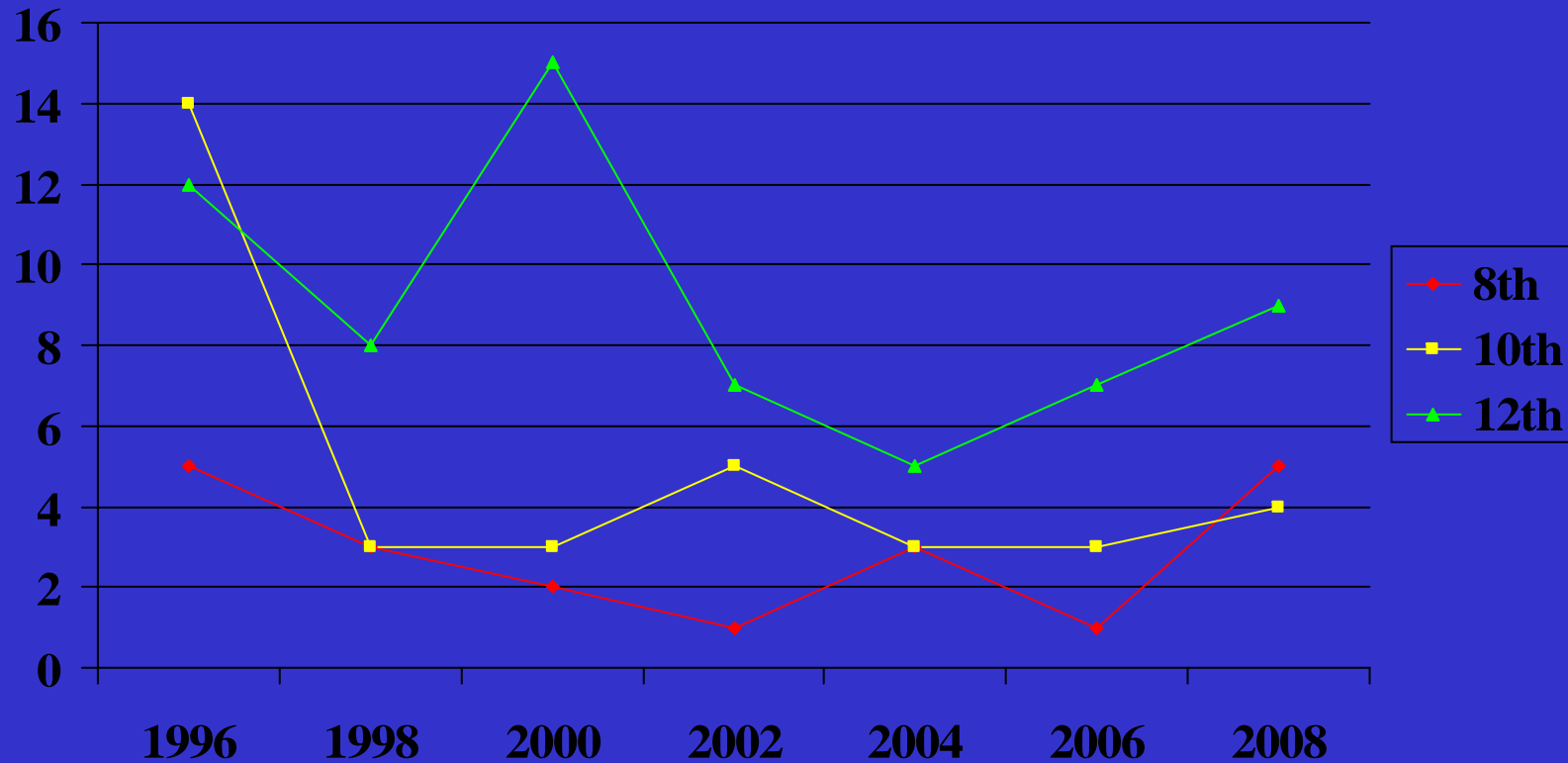
DRIVING

Percentage of students reporting having been in a car being driven by someone under the influence of alcohol or drugs two or more times in the past 30 days.



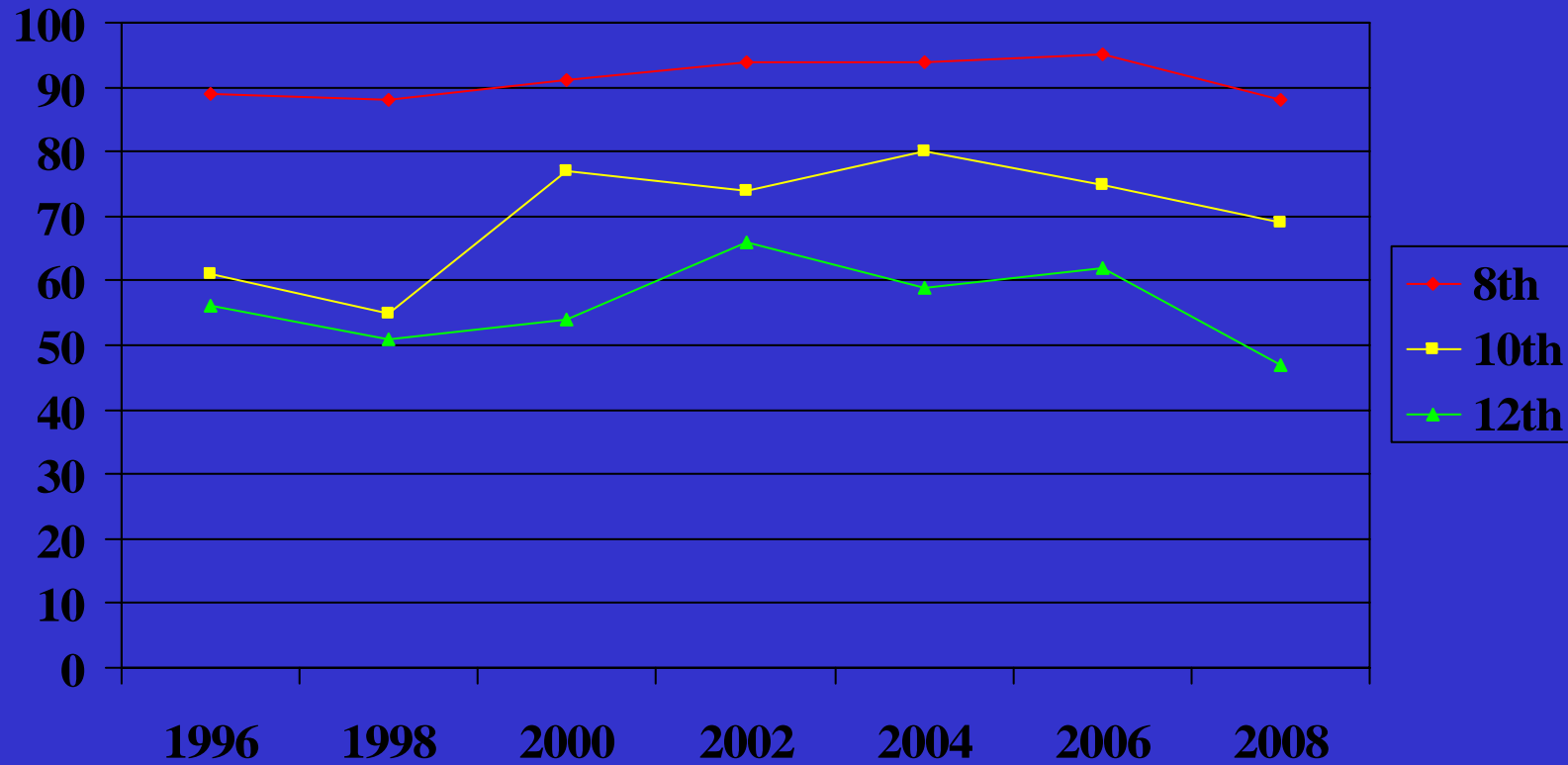
DRIVING

Percentage of students reporting having driven a car while under the influence of alcohol or drugs at least two times in the past 30 days.



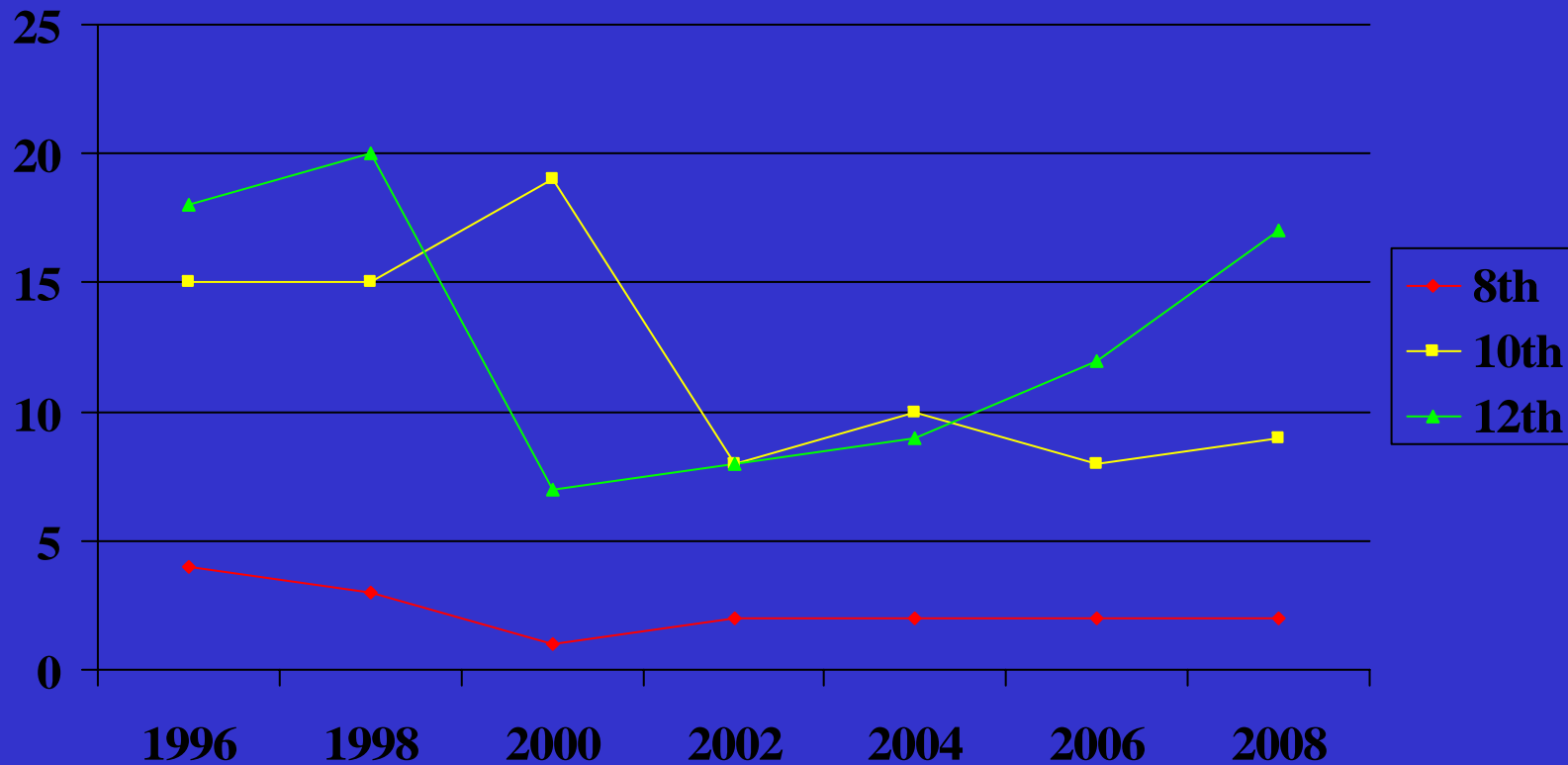
MARIJUANA

Percentage of students reporting NO USE



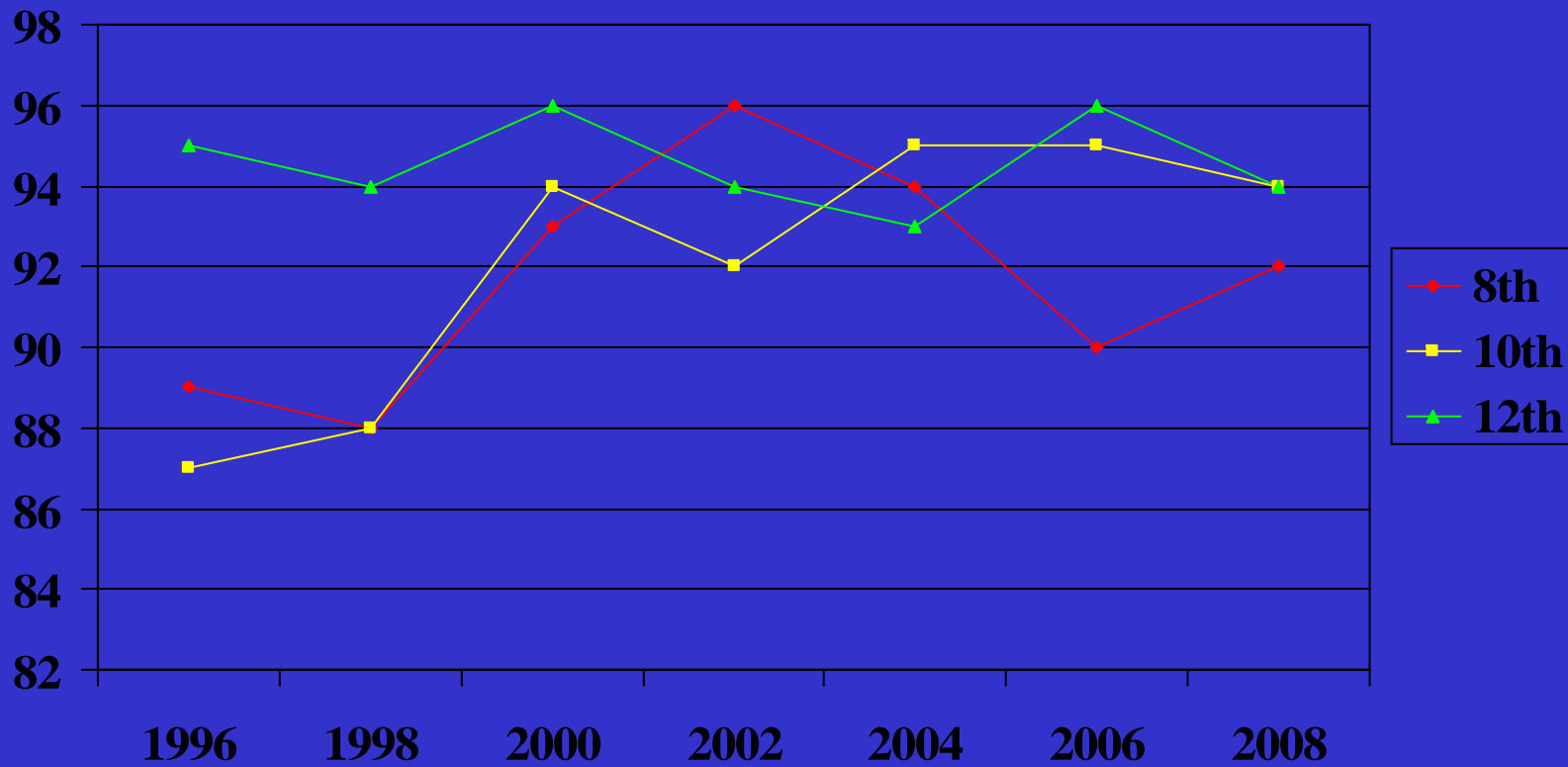
MARIJUANA

Percentage of students reporting WEEKLY or DAILY USE



INHALANTS

Percentage of students reporting NO USE



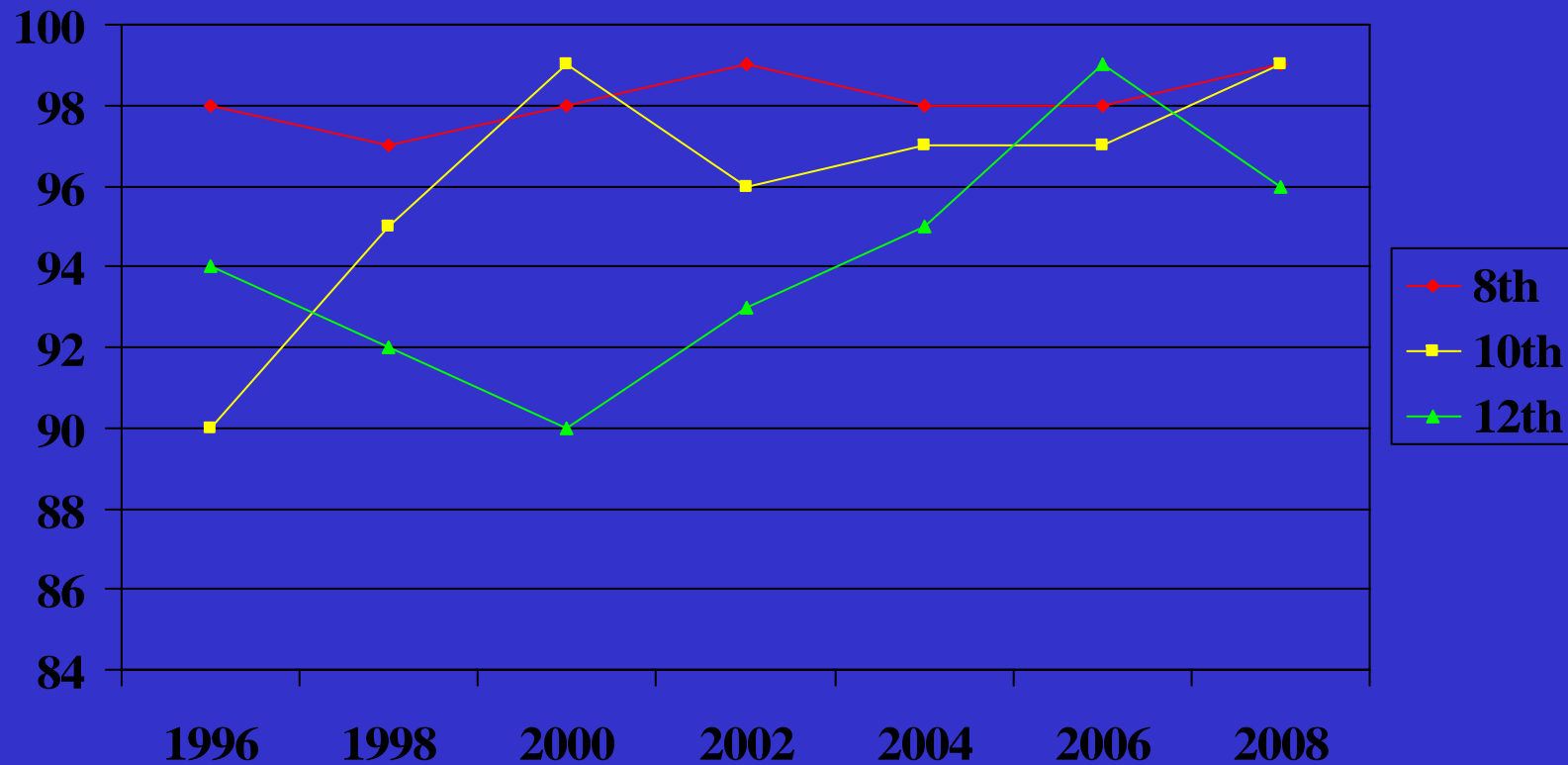
INHALANTS

Percentage of students reporting MONTHLY USE
Monthly Use: Student has used at least 6 times in the last 12 months



METHAMPHETAMINES

Percentage of students reporting NO USE



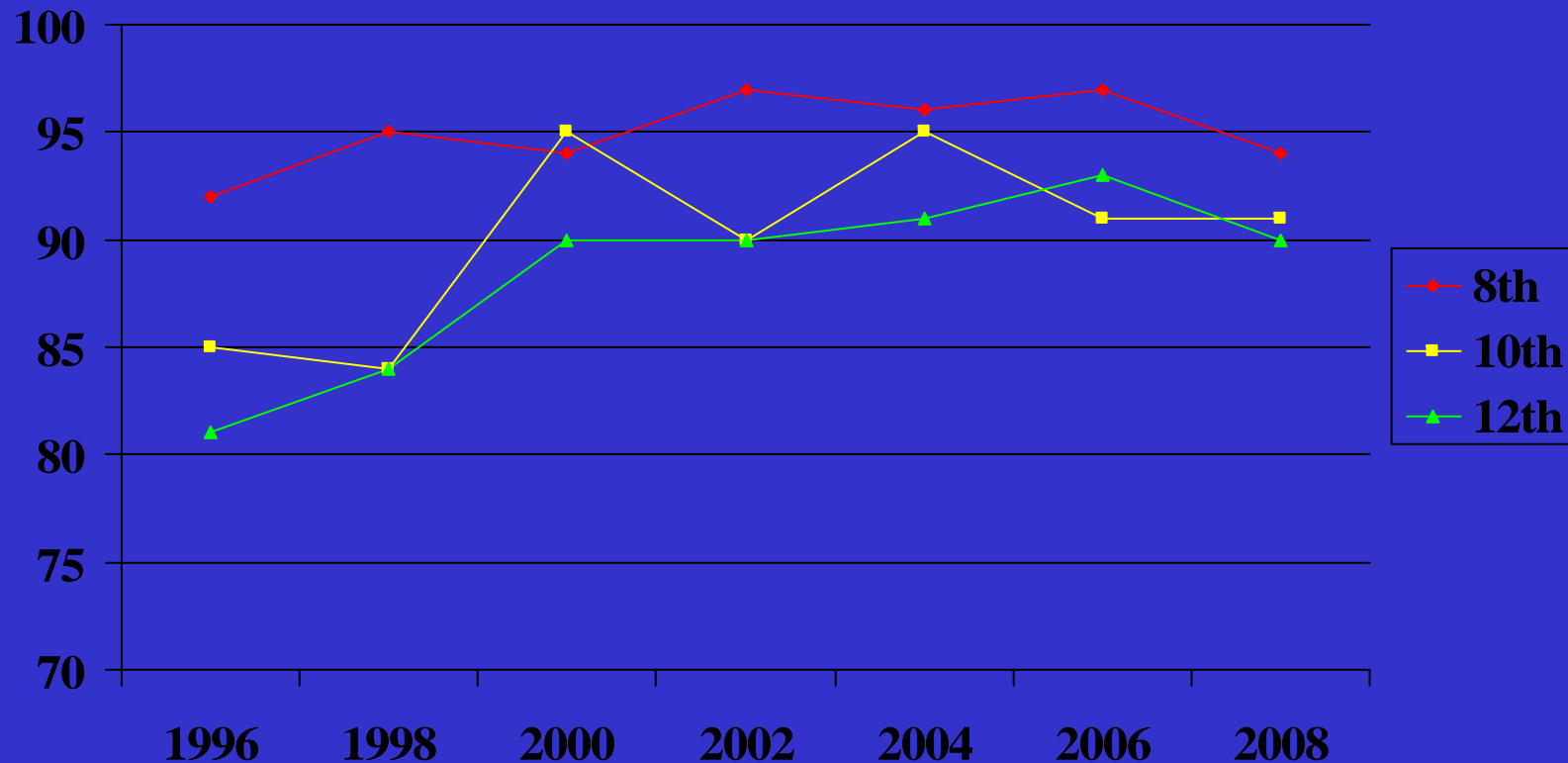
METHAMPHETAMINES

Percentage of students reporting WEEKLY or MONTHLY USE



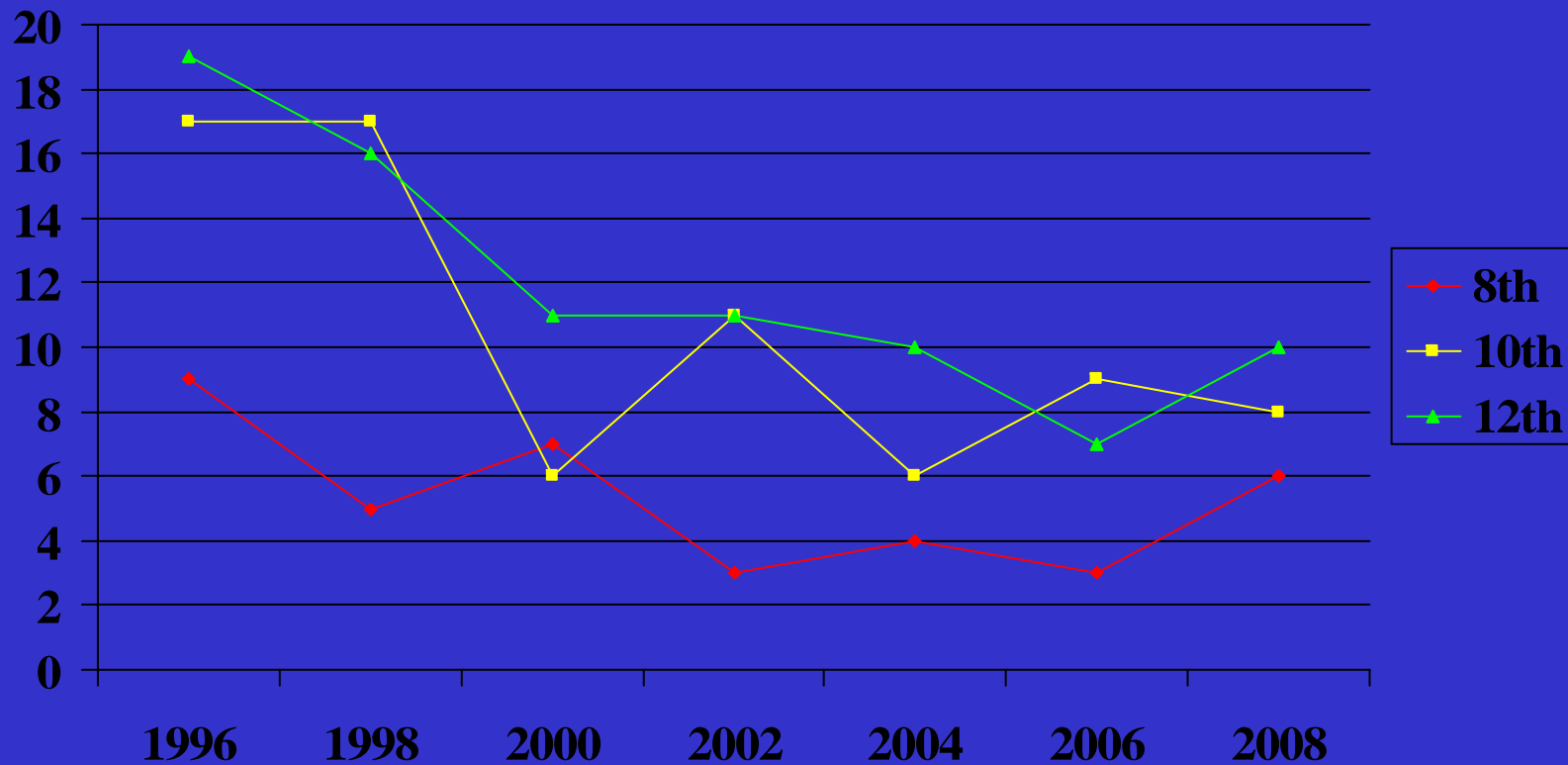
Over-the-Counter Medication

Percentage of students reporting NEVER having used OTC meds to get high



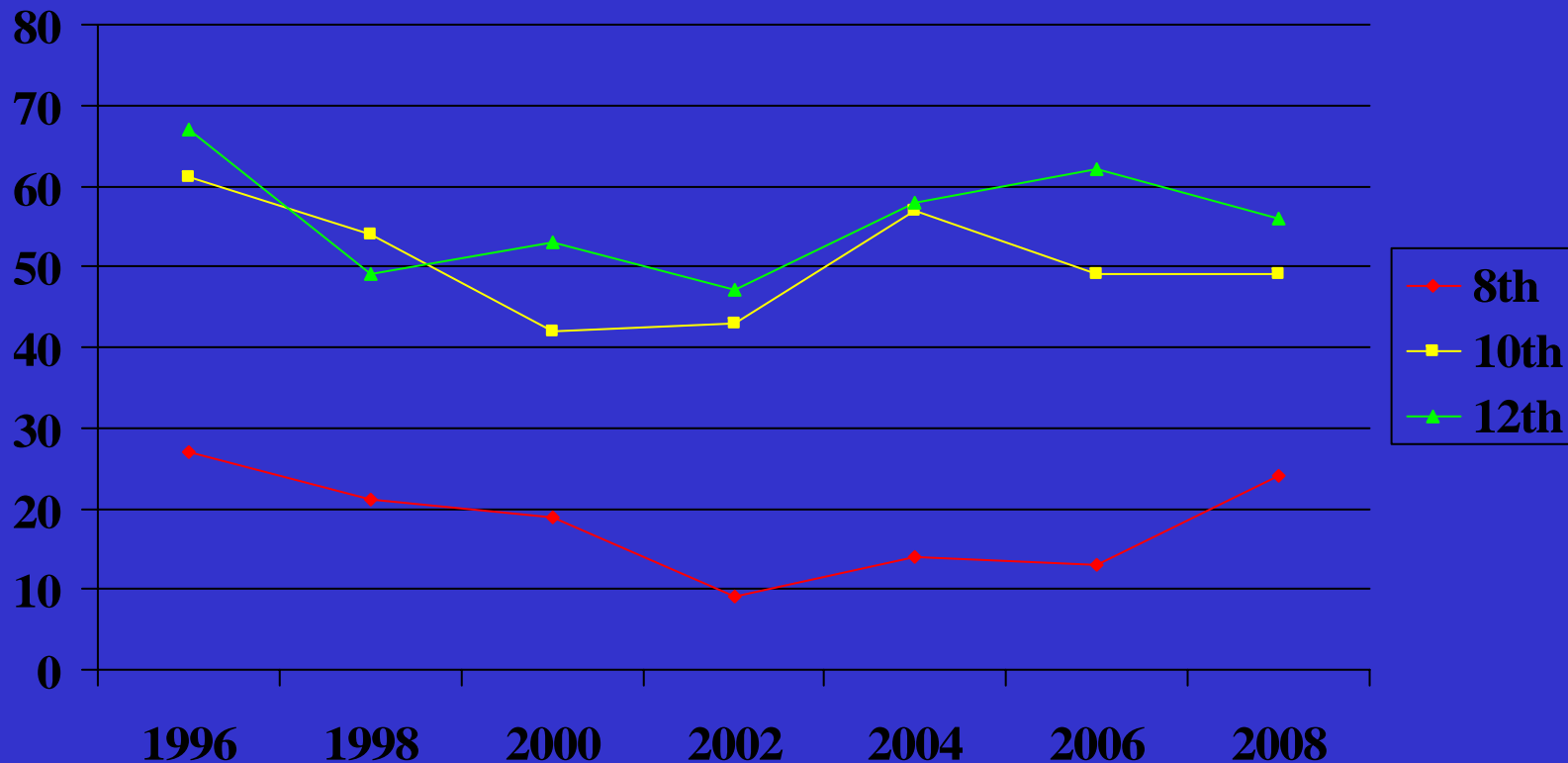
Over-the-Counter Medication

Percentage of students reporting at least SOME USE of OTC meds to get high



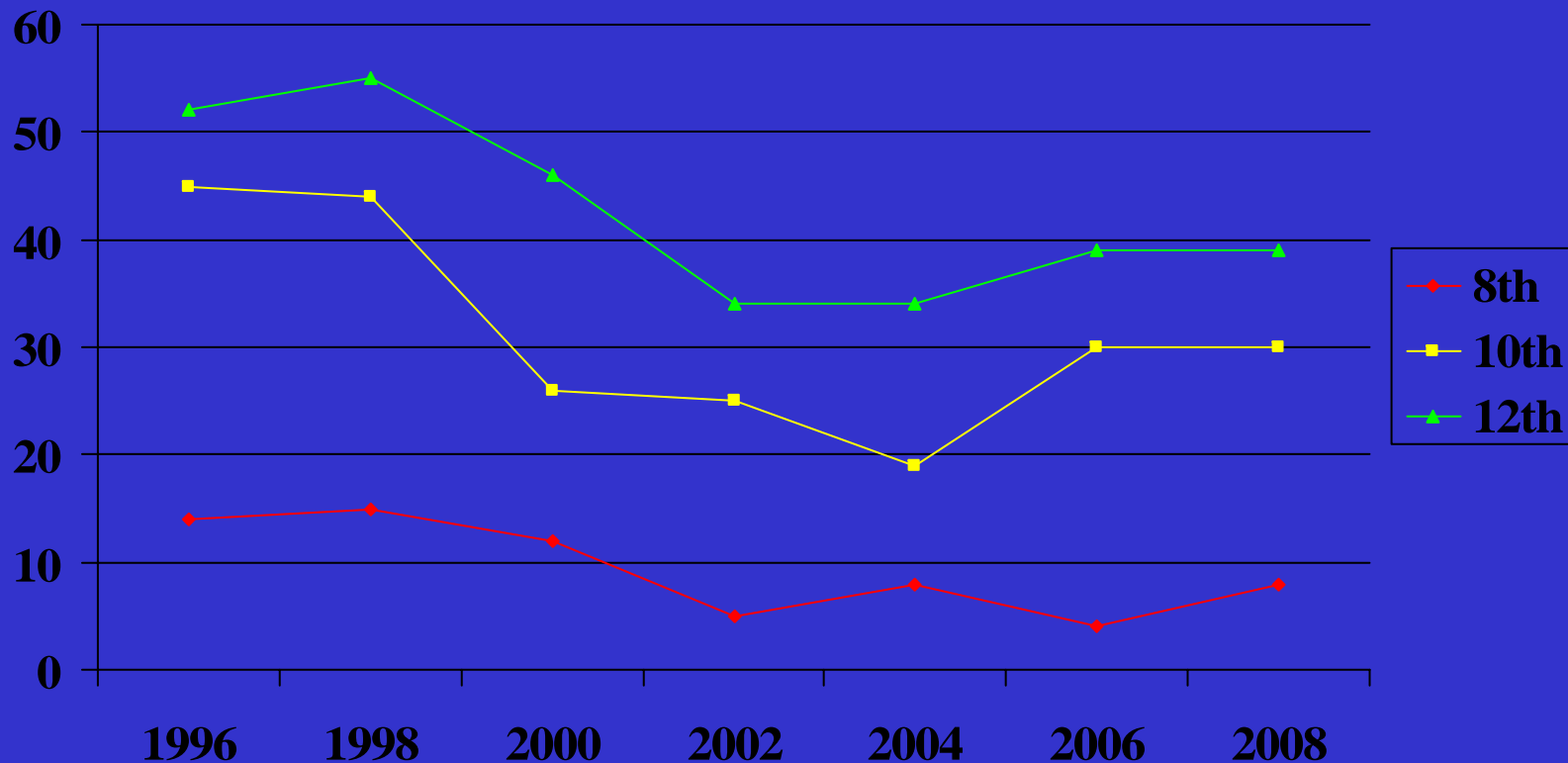
DRUG/ALCOHOL USE AT SCHOOL

Percentage of students stating that they think there is both alcohol and drug use at school



DRUG/ALCOHOL USE AT PARTIES

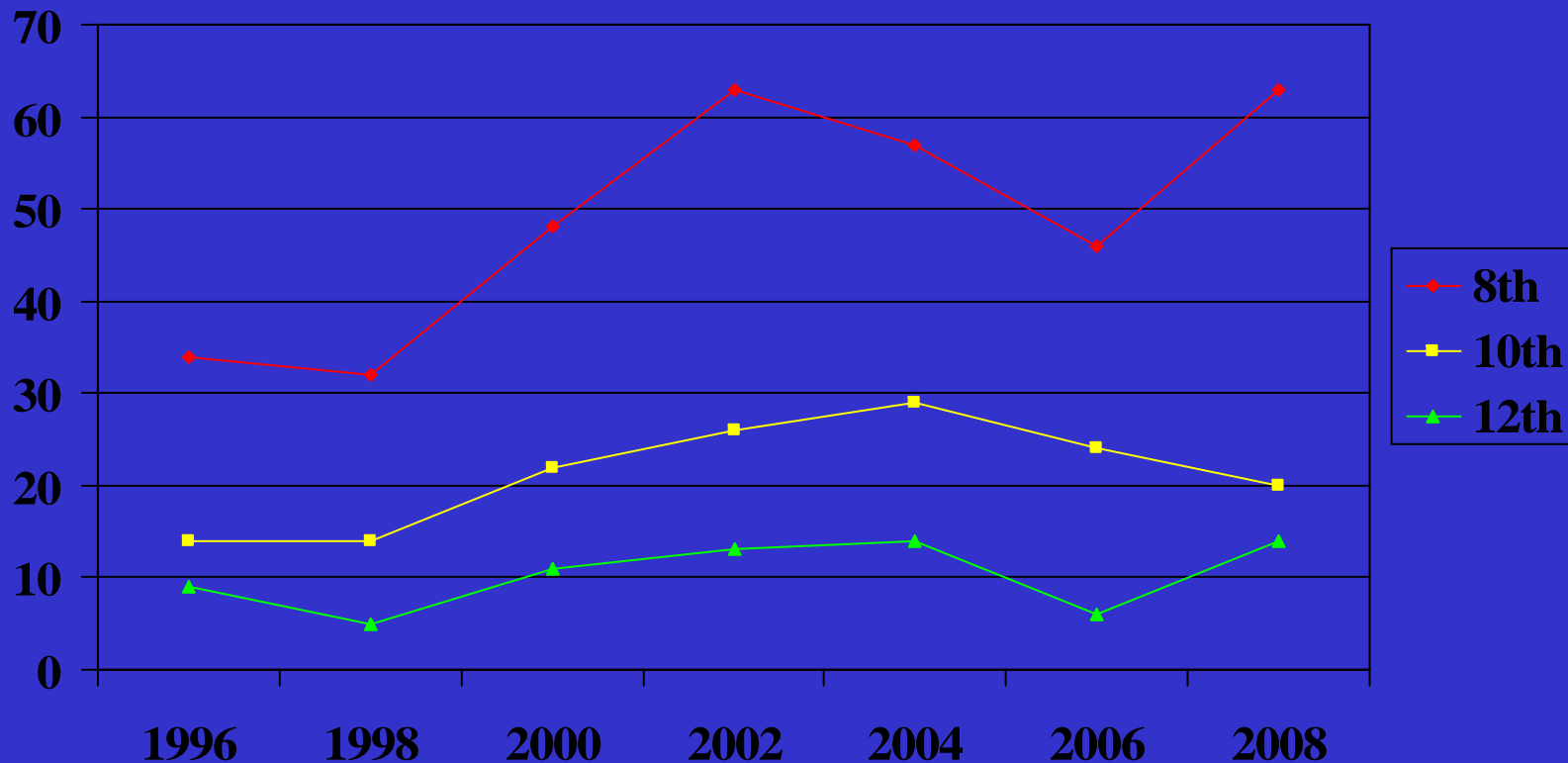
Percentage of students reporting that both alcohol and drugs are at most parties they attend



Moscow Students

At-Risk Scale: Low Risk

Risk: degree to which student reports experiences or characteristics that predict adolescent drug or alcohol abuse



Moscow Students

At-Risk Scale: High Risk

Risk: degree to which student reports experiences or characteristics that predict adolescent drug or alcohol abuse

